



OAKFIELD



1 Burdette Place, Hastings
£1,250 Per Calendar Month



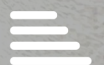
2



1

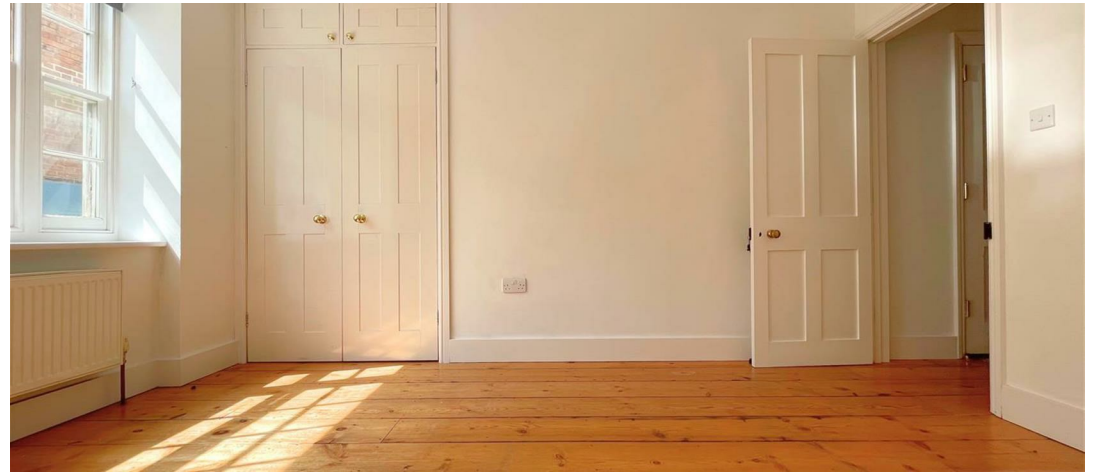


1



C

SUMMARY





Living Room

17'3" x 10'4"

Kitchen

13'6" x 13'5"

Bedroom One

12'3" x 10'9"

Bedroom Two

9'8" x 7'3"

Bathroom

5'8" x 3'9"

Courtyard

Council Tax Band B - £1,986.55 per annum













INFORMATION

Local Authority

Hastings Borough Council

Council Tax Band

B

Opening Hours

Monday to Friday	9.00am - 5.30pm
Saturday	9.00am - 4.00pm

Viewings

Please contact us on 01424 446644 if you wish to arrange a viewing appointment for this property or require further information.

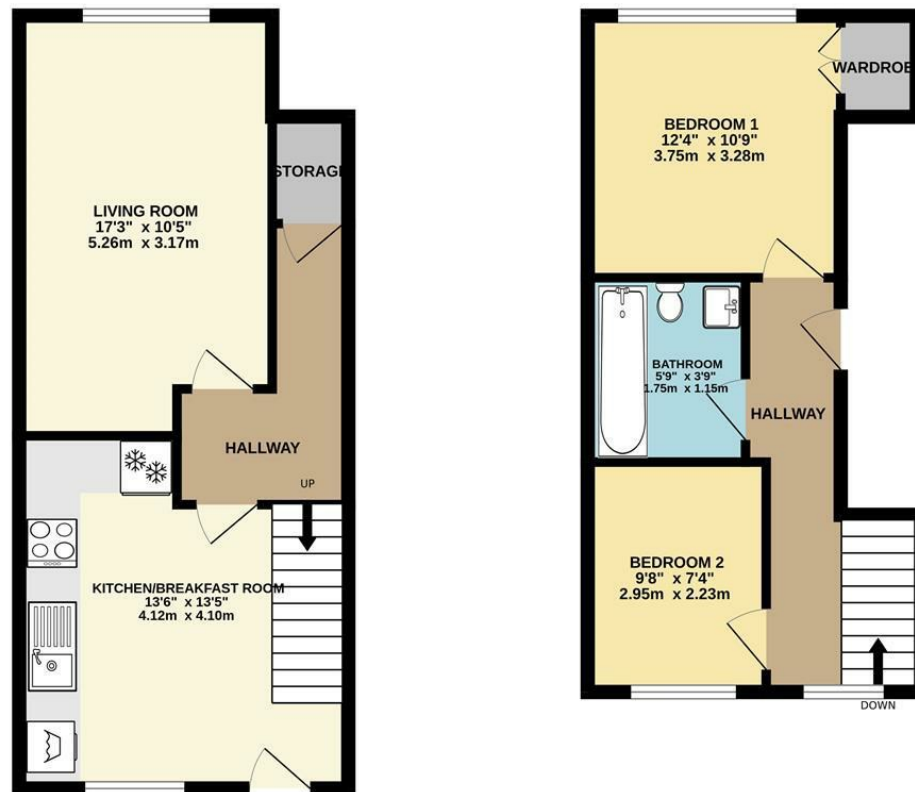
Area Map



Floorplan



GROUND FLOOR
324 sq.ft. (30.1 sq.m.) approx.




TOTAL FLOOR AREA: 741 sq.ft. (68.8 sq.m.) approx.

Whilst every attempt has been made to ensure the accuracy of the floorplan contained here, measurements of doors, windows, rooms and any other items are approximate and no responsibility is taken for any error, omission or mis-statement. This plan is for illustrative purposes only and should be used as such by any prospective purchaser. The services, systems and appliances shown have not been tested and no guarantee as to their operability or efficiency can be given.

Made with Metreox ©2025

Energy Efficiency Graph

Energy Efficiency Rating		Current	Potential
<p><i>Very energy efficient - lower running costs</i></p> <p>(92 plus) A</p> <p>(81-91) B</p> <p>(69-80) C</p> <p>(55-68) D</p> <p>(39-54) E</p> <p>(21-38) F</p> <p>(1-20) G</p> <p><i>Not energy efficient - higher running costs</i></p>		73	81
England & Wales		EU Directive 2002/91/EC 	

These particulars, whilst believed to be accurate are set out as a general outline only for guidance and do not constitute any part of an offer or contract. Intending purchasers should not rely on them as statements of representation of fact, but must satisfy themselves by inspection or otherwise as to their accuracy. No person in this firm's employment has the authority to make or give any representation or warranty in respect of the property.